

VISION

retigo®



Blue Vision 611 i, b - Orange Vision 611 i, b

General characteristics

- VISION TOUCH - Control touch panel
- Large door handle with two positions for comfort, ease of use and safety
- Curved door glass with cool down function
- Hygienic cooking chamber with rounded inside corners
- Even baking thanks to the bi-directional fan
- Perfect illumination of the cooking chamber by means of halogen lights
- Double glass door that limits the escape of heat
- Run-off tray under the door for collecting condensed water
- Removable door seal
- WSS - water saving system prevents high water consumption in all cooking modes
- Two position door catch (safety position)
- Integrated shower for easy cleaning which does not use softened water
- SDS - service and diagnostic system- automatic evaluation of microprocessor error reports
- IPX5 protection
- BCS - boiler control system*
- CCS - calcium control system*
- Optional sets 611/611, 611/1011, 611/RG(HC)
- One extra tray
- Possibility of modification for 6 x GN400/600 (baking sheets)

* - valid for boiler combi steamers

Models characteristics

B 611 i, b

- **EASY COOKING** - Fast and simple control
- **VISION AGENT** - Virtual help-mate
- **ACTIVE CLEANING** - Automatic cleaning system
- Coloured touch screen display
- Hot air 30 - 300 °C
- Combination 30 - 300 °C
- Steaming 99 - 130 °C
- Bio steaming 30 - 98 °C
- 4 point temperature core probe
- Curved glass - helps to cool down the outer door glass
- Delta T cooking, steaming
- Low temperature cooking
- Cook & Hold
- Regeneration
- Programming - up to 1000 programs with 20 steps
- 5 speed ventilator
- Ventilator fan timing
- Separate rack timing
- Learn function
- Fan Stop - immediate stop of ventilator when doors opened
- Automatic preheating/cooling
- Autoclimate - steam saturation control
- Automatic start
- QuickView - fast program overview
- Flap valve
- ACM (Automatic Capacity Management)
- Energy logic
- Double glass doors preventing heat escape
- Turbo steam function - fast steam
- USB Plug-in
- LAN - internet communication channel

Optional

- Left door
- Safety door opening in two steps
- Optional sets 611/611, 611/1011, 611/RG(HC)
- Possibility of modification for 6 x 400/600 (set of ladders)
- Optional voltage 3N~/230V/50Hz

Marine specification

- o 3N~/400V/50-60Hz without N
- o 3N~/440V/50-60Hz without N

i - injection, b - boiler

O 611 i, b

- Digital control display
- Hot air 30 - 300 °C
- Combination 30 - 300 °C
- Steaming 99 - 130 °C
- Bio steaming 30 - 98 °C
- Regeneration
- Curved glass - helps to cool down the outer door glass
- 5 programs with 5 steps
- 1 speed ventilator
- Automatic preheating/cooling
- Automatic start
- Energy logic
- Double glass door preventing heat escape
- USB Plug-in
- LAN - internet communication channel

Optional

- Left door
- Flap valve
- Temperature Core probe
- Software extension - 99 programs with 5 steps
- Safety door opening in two steps
- Optional sets 611/611, 611/1011, 611/RG(HC)
- Possibility of modification for 6 x 400/600 (set of ladders)
- Optional voltage 3N~/230V/50Hz

Marine specification

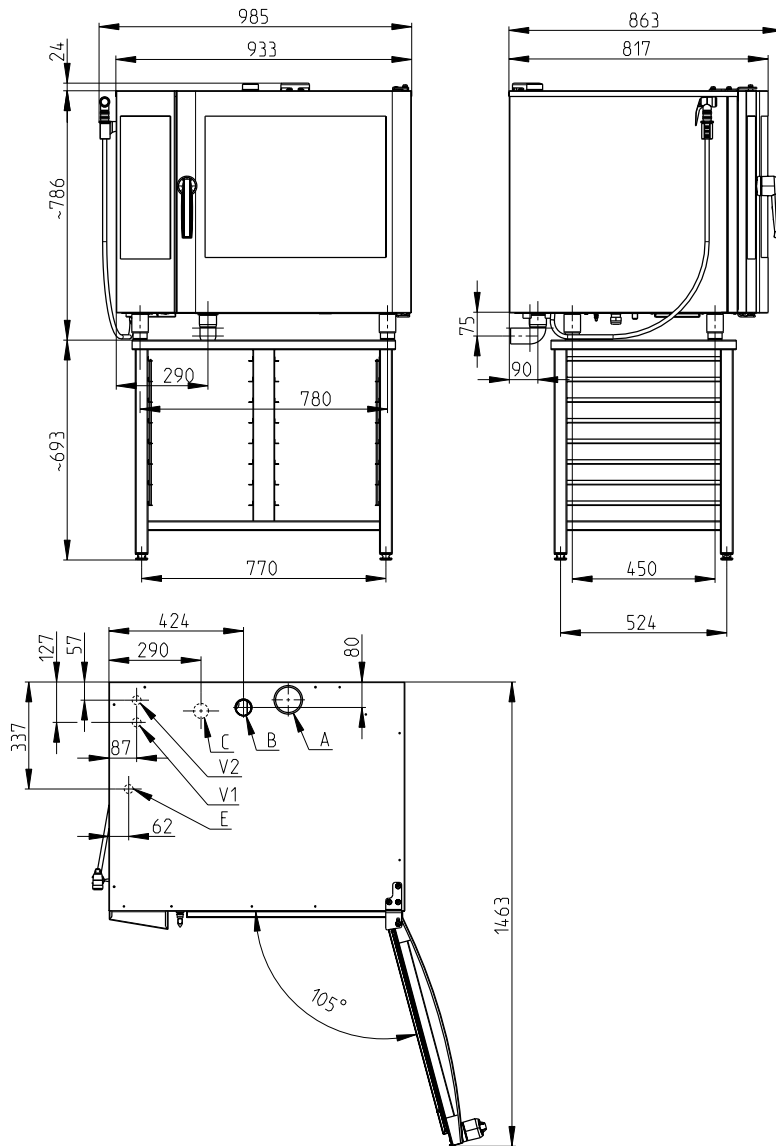
- o 3N~/400V/50-60Hz without N
- o 3N~/440V/50-60Hz without N

i - injection, b - boiler

Optional Accessories - Retigo Vision 611 i, b

- ST 1116 - stainless steel stand with 16 trays GN 1/1
- ST 1116 FP - stainless steel flat pack stand with 16 trays GN 1/1
- ST 1108 - stainless steel stand with 8 trays GN 1/1

T O U C H T H E F U T U R E



A - flap valve, B - chimney, C - drain, E - electricity, V1 - untreated water, V2 - treated water

а б в г д е ж з и к л м н о п

Model **611**

B 611 i; O 611 i

B 611 b; O 611 b

technical data

Energy	electricity	electricity
Steam generation	injection	boiler
Capacity	7 trays GN1/1	7 trays GN1/1
Capacity (optional)	7 trays 400/600	7 trays 400/600
Capacity of meals	50 - 150	50 - 150
Spacing [mm]	65	65
Dimensions (W x H x D) [mm]	933 x 786 x 863	933 x 786 x 863
Weight	110 kg	116 kg
Total power	10,2 kW	10,2 kW
Steam generation power		9 kW
Fuse protection	16 A	16 A
Voltage	3 N~/400 V/50 Hz	3 N~/400 V/50 Hz
Water connection / drain [mm]	G 3/4" / 50	G 3/4" / 50
Temperature	30 - 300 °C	30 - 300 °C

Size	Model	Technical specification
611	B611i	E0611IA
	O611i	E0611IZ
	B611b	E0611BA
	O611b	E0611BZ

retigo

RETIGO Ltd., Láň 2310, PS 43, CZ
 756 64 Rožnov pod Radhoštěm
 tel.: +420 571 665 511
 fax: +420 571 665 554
 e-mail: sale@retigo.com

vision